



August 15, 2014

VIA EMAIL

John Warner, US Fish & Wildlife Service
Melissa Grader, US Fish & Wildlife Service
Ken Sprankle, US Fish & Wildlife Service
Caleb Slater, MA Division of Fish & Wildlife
Jesse Leddick, MA Natural Heritage
Jessica Pruden, National Marine Fisheries Service
Bill McDavitt, National Marine Fisheries Service
Alex Haro, USGS Conte Lab

Re: FirstLight, Relicensing of the Turners Falls Hydroelectric Project (FERC No. 1889) and Northfield Mountain Pumped Storage Project (FERC No. 2485), Study No. 3.3.18- *Impact of Turners Falls Canal Drawdown on Fish Migration and Aquatic Organisms*

Dear All,

FirstLight Hydro Generating Company (FirstLight) is currently in the process of relicensing its Turners Falls Hydroelectric Project (FERC No. 1889) and Northfield Mountain Pumped Storage Project (FERC No. 2485) with the Federal Energy Regulatory Commission (FERC). On July 17, 2014 FirstLight emailed a letter to resource agencies and Conte Lab researchers about the final number and placement of 1-m by 1-m quadrats that will be used to determine the distribution and relative abundance of juvenile sea lamprey (ammocoetes) and mussels as required in Study No. 3.3.18- *Impact of Turners Falls Canal Drawdown on Fish Migration and Aquatic Organisms*. John Warner and Jesse Leddick replied to the letter and requested more quadrats in the western bank of the canal, especially in Zones 3-5. Other requests include: identifying mussels found as part of quadrat surveys to species; reporting average and variances of species counts for each Zone, with habitat type and species included; reporting similar mean measurements and variances for ammocoete sea lamprey; describing the second survey to occur the day prior to rewatering the canal; and increasing the size of the 1-m by 1-m quadrats to 2-m by 2-m.

FirstLight considered your comments about the locations of the quadrats and as recommended have added additional quadrats on the western bank particularly in Zones 3-5 (Figure 1). These new sampling locations follow the recommendations that along the western bank, thalweg and eastern bank each have at least 10 quadrat locations. We plan to identify the mussels found in the quadrat sampling to species and

John S. Howard

Director FERC Compliance
Chief Dam Safety Engineer

FirstLight Power Resources, Inc.
99 Millers Falls Road
Northfield, MA 01360
Tel. (413) 659-4489/ Fax (413) 422-5900/
E-mail: john.howard@gdfsuezna.com

will report the average and variances of species counts by Zone including habitat type for mussels and ammocoete sea lamprey. As indicated in the SPDL, FirstLight plans to conduct a second survey, the same as the first survey, the day before the canal is rewatered on Friday October 3, 2014. However Firstlight does not plan to increase the quadrat size from 1-m by 1-m to 2-m by 2-m as FERCs Study Plan Determination Letter approved the use of 1-m by 1-m quadrats as set forth in the Revised Study Plan.

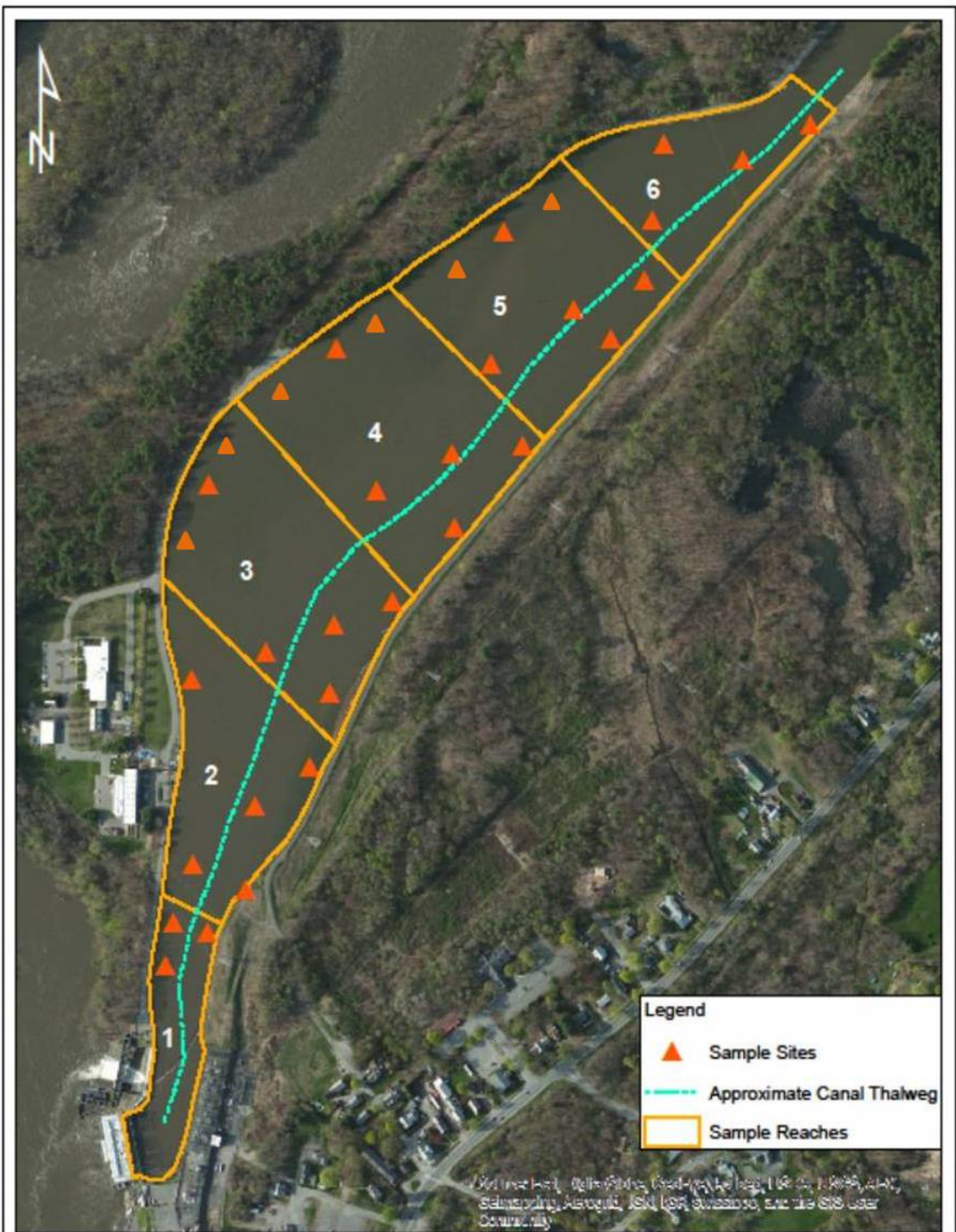
Sincerely,

A handwritten signature in black ink, appearing to read "John Howard". The signature is fluid and cursive, with the first name "John" being more prominent than the last name "Howard".

John Howard

Cc: Ken Hogan, FERC (via email)
Don Pugh, TU (via email)
Andrea Donlon, CRWC (via email)

Attachment: Figure 1



FIRSTLIGHT POWER RESOURCES

Proposed Study Plan



Sample locations for Canal Drawdown Survey

Copyright © 2013 FirstLight Power Resources All rights reserved.

Path: W:\gis\map\Study_Plan\Drawdown\SampleLocations.mxd