



Photo ID 1222 (D/S)



Segment 520 – Right Bank

Riverbank Features	Characteristics
Upper Riverbank Slope	Steep
Upper Riverbank Height	High
Upper Riverbank Sediment	Silt/Sand
Upper Riverbank Vegetation	Heavy
Lower Riverbank Slope	Flat/Beach
Lower Riverbank Sediment	Silt/Sand
Lower Riverbank Vegetation	None to very sparse
Type of Erosion	Undercut
Potential Erosion Indicators	Creep/leaning trees, Exposed roots
Stage of Erosion	Stable
Extent of Erosion	None/Little

**QA Observations:** Upon review of the photos for this segment, classification made in the field was confirmed and additional indicators of potential future erosion were included.



Photo 1223 Location





Photo ID 1241 (right, U/S portion of segment with labels)  
2013 Full River Reconnaissance – 2015 Addendum  
Attachment A - **DRAFT**





Photo ID 1240 (D/S)



Segment 530 – Right Bank

Riverbank Features	Characteristics
Upper Riverbank Slope	Moderate
Upper Riverbank Height	High
Upper Riverbank Sediment	Silt/Sand
Upper Riverbank Vegetation	Heavy
Lower Riverbank Slope	Flat/Beach
Lower Riverbank Sediment	Gravel
Lower Riverbank Vegetation	None to very sparse
Type of Erosion	Undercut
Potential Erosion Indicators	Creep/leaning trees, Exposed roots
Stage of Erosion	Stable
Extent of Erosion	None/Little

**QA Observations:** Upon review of the photos for this segment, classification made in the field was confirmed and additional indicators of potential future erosion were included.



Photo 1241 Location





Photo ID 1257 (labeled portion of photo shows left, D/S portion of segment. Dashed lines represent approximate ends of segment)





Photo ID 1258 (U/S, includes next segment)



Segment 540 – Right Bank

Riverbank Features	Characteristics
Upper Riverbank Slope	Steep
Upper Riverbank Height	High
Upper Riverbank Sediment	Bedrock
Upper Riverbank Vegetation	Moderate
Lower Riverbank Slope	Steep
Lower Riverbank Sediment	Bedrock
Lower Riverbank Vegetation	None to very sparse
Type of Erosion	
Potential Erosion Indicators	None
Stage of Erosion	Stable
Extent of Erosion	None/Little

**QA Observations:** Upon review of the photos for this segment, classification made in the field was confirmed.



Photo 1257 Location





Photo ID 1298 (mid- to right, U/S portion of segment)





Photo ID 1297 (D/S)



Segment 550 – Right Bank

Riverbank Features	Characteristics
Upper Riverbank Slope	Moderate
Upper Riverbank Height	High
Upper Riverbank Sediment	Silt/Sand
Upper Riverbank Vegetation	Heavy
Lower Riverbank Slope	Flat/Beach
Lower Riverbank Sediment	Silt/Sand
Lower Riverbank Vegetation	None to very sparse
Type of Erosion	
Potential Erosion Indicators	Creep/leaning trees, Notch
Stage of Erosion	Stable
Extent of Erosion	None/Little

**QA Observations:** Upon review of the photos for this segment, classification made in the field was confirmed and additional indicators of potential future erosion were included.



Photo 1298 Location





Photo ID 1318 (near mid-segment)





Photo ID 1317 (D/S)



Photo ID 1319 (U/S)



Segment 560 – Right Bank

Riverbank Features	Characteristics
Upper Riverbank Slope	Flat
Upper Riverbank Height	Low
Upper Riverbank Sediment	Silt/Sand
Upper Riverbank Vegetation	Moderate
Lower Riverbank Slope	Flat/Beach
Lower Riverbank Sediment	Silt/Sand
Lower Riverbank Vegetation	Moderate
Type of Erosion	
Potential Erosion Indicators	None
Stage of Erosion	Stable
Extent of Erosion	None/Little

**QA Observations:** Upon review of the photos for this segment, classification made in the field was confirmed.



Photo 1318 Location





Photo ID 1339 (near mid-segment)





Photo ID 1338 (D/S)



Segment 570 – Right Bank

Riverbank Features	Characteristics
Upper Riverbank Slope	Steep
Upper Riverbank Height	High
Upper Riverbank Sediment	Silt/Sand
Upper Riverbank Vegetation	Heavy
Lower Riverbank Slope	Flat/Beach
Lower Riverbank Sediment	Silt/Sand
Lower Riverbank Vegetation	None to very sparse
Type of Erosion	
Potential Erosion Indicators	None
Stage of Erosion	Stable
Extent of Erosion	None/Little

**QA Observations:** Upon review of the photos for this segment, classification made in the field was confirmed.



Photo 1339 Location





Photo ID 1370 (right, U/S portion of segment)





Photo ID 1369 (middle)



Segment 580 – Right Bank

Riverbank Features	Characteristics
Upper Riverbank Slope	Moderate
Upper Riverbank Height	High
Upper Riverbank Sediment	Bedrock
Upper Riverbank Vegetation	Moderate
Lower Riverbank Slope	Moderate
Lower Riverbank Sediment	Bedrock
Lower Riverbank Vegetation	None to very sparse
Type of Erosion	
Potential Erosion Indicators	None
Stage of Erosion	Stable
Extent of Erosion	None/Little

**QA Observations:** Upon review of the photos for this segment, classification made in the field was confirmed.



Photo 1370 Location



Segment 590 – Right Bank

No photo available. This segment was conducted by walking along island because water was too shallow to navigate through this channel on the back side of the island.

Riverbank Features	Characteristics
Upper Riverbank Slope	Moderate
Upper Riverbank Height	Medium
Upper Riverbank Sediment	Bedrock
Upper Riverbank Vegetation	Moderate
Lower Riverbank Slope	Moderate
Lower Riverbank Sediment	Bedrock
Lower Riverbank Vegetation	None to very sparse
Type of Erosion	
Potential Erosion Indicators	None
Stage of Erosion	Stable
Extent of Erosion	None/Little





Photo ID 252 (segment covered by photo)





Photo ID 253 (D/S, includes next segment)



Segment 12 – Left Bank

Riverbank Features	Characteristics
Upper Riverbank Slope	Steep
Upper Riverbank Height	High
Upper Riverbank Sediment	Silt/Sand
Upper Riverbank Vegetation	Sparse
Lower Riverbank Slope	Flat/Beach
Lower Riverbank Sediment	Silt/Sand
Lower Riverbank Vegetation	None to very sparse
Type of Erosion	Planar Slip, Overhanging Bank
Potential Erosion Indicators	Overhanging Bank, Creep/leaning trees, Exposed roots, Other
Stage of Erosion	Active Erosion
Extent of Erosion	Extensive

**QA Observations:** Upon review of the photos for this segment, classification made in the field was confirmed and additional indicators of potential future erosion were included.

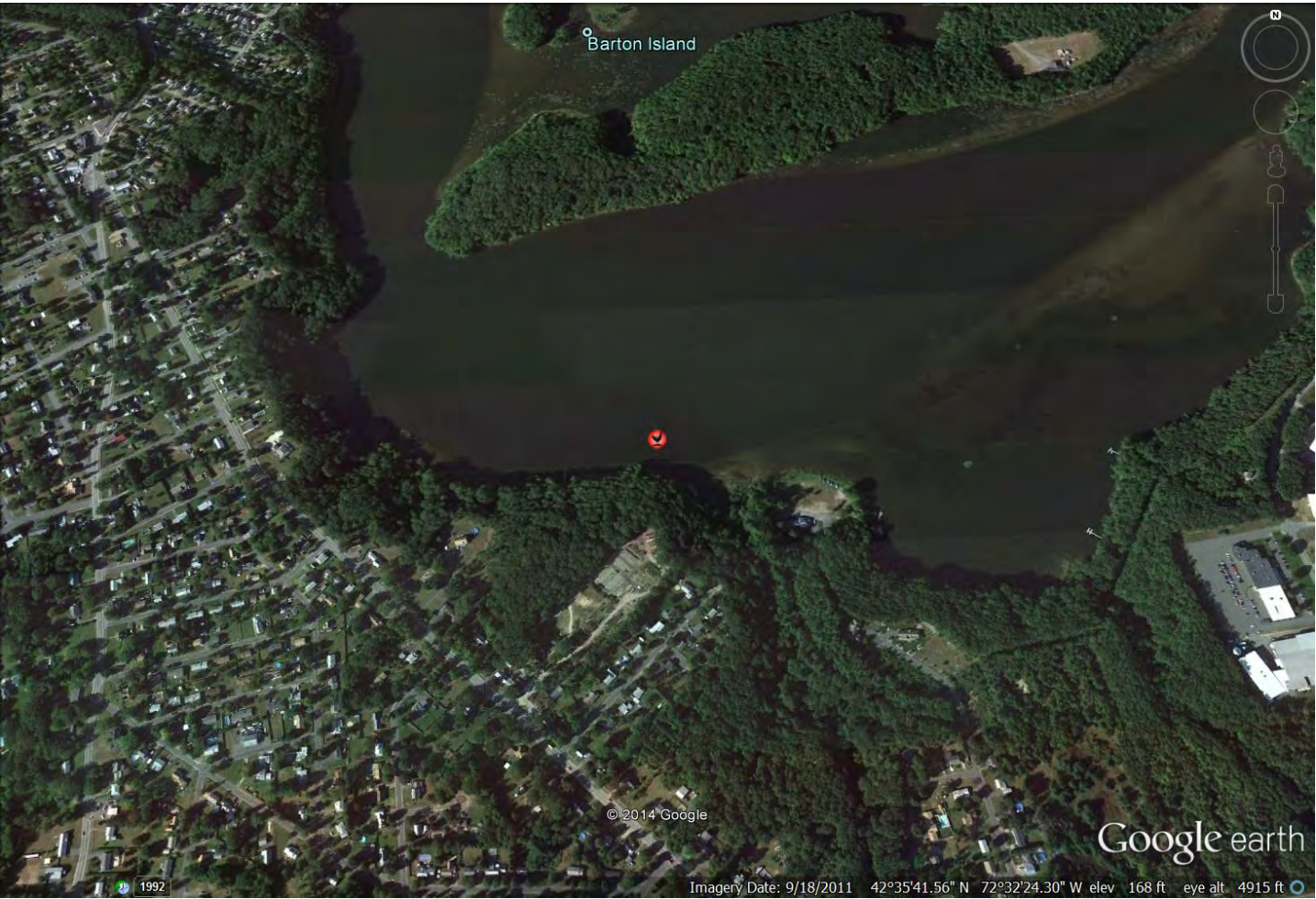


Photo 252 Location





Photo ID 609 (near right, D/S portion of segment)





Photo ID 607 (D/S)



Photo ID 608 (D/S)





Photo ID 610 (middle)



Photo ID 611 (middle)





Photo ID 612 (middle)



Photo ID 613 (U/S, includes next segment)



Segment 89 – Left Bank

Riverbank Features	Characteristics
Upper Riverbank Slope	Moderate
Upper Riverbank Height	High
Upper Riverbank Sediment	Silt/Sand
Upper Riverbank Vegetation	Heavy
Lower Riverbank Slope	Moderate
Lower Riverbank Sediment	Cobbles
Lower Riverbank Vegetation	None to very sparse
Type of Erosion	Undercut
Potential Erosion Indicators	Exposed roots
Stage of Erosion	Stable
Extent of Erosion	None/Little

**QA Observations:** Upon review of the photos for this segment, classification made in the field was confirmed. Segment added as a site of interest due to planned repair to existing restoration to deal with undercut and exposed roots.



Photo 609 Location





Photo ID 845 (segment is labeled portion of photo. Dashed line represents approximate end of segment)



Segment 182 – Left Bank

Riverbank Features	Characteristics
Upper Riverbank Slope	Steep
Upper Riverbank Height	Low
Upper Riverbank Sediment	Silt/Sand
Upper Riverbank Vegetation	Sparse
Lower Riverbank Slope	Flat/Beach
Lower Riverbank Sediment	Silt/Sand
Lower Riverbank Vegetation	None to very sparse
Type of Erosion	Gully
Potential Erosion Indicators	Exposed roots
Stage of Erosion	Eroded
Extent of Erosion	Some

**QA Observations:** Upon review of the photos for this segment, classification made in the field was confirmed. Segment added to include gully.

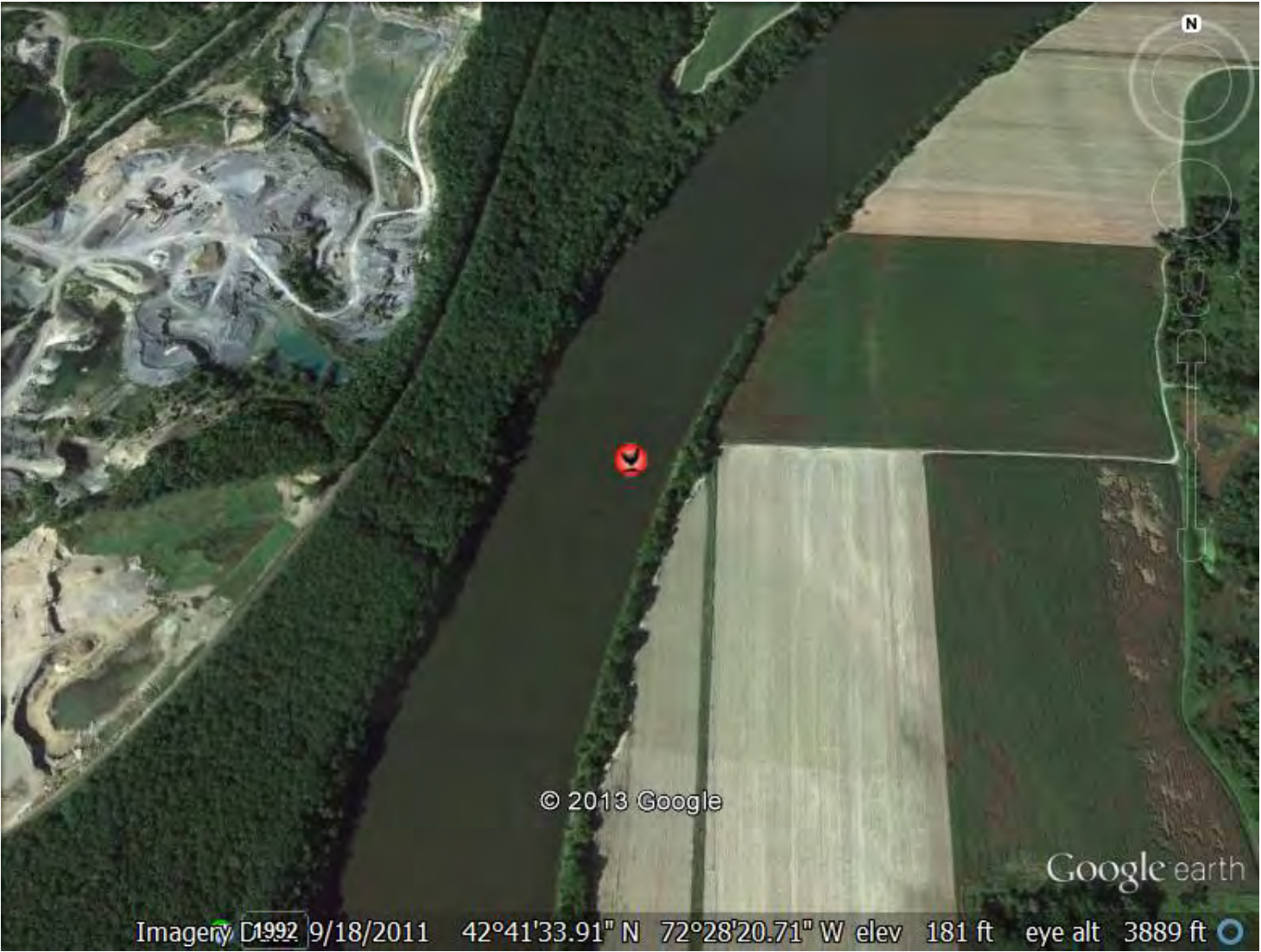


Photo 845 Location





Photo ID 1631 (photo covers most of segment)



Segment 279 – Left Bank

Riverbank Features	Characteristics
Upper Riverbank Slope	Steep
Upper Riverbank Height	High
Upper Riverbank Sediment	Silt/Sand
Upper Riverbank Vegetation	Heavy
Lower Riverbank Slope	Flat/Beach
Lower Riverbank Sediment	Gravel
Lower Riverbank Vegetation	Sparse
Type of Erosion	Undercut
Potential Erosion Indicators	Creep/Leaning Trees, Exposed roots
Stage of Erosion	Stable
Extent of Erosion	None/Little

**QA Observations:** Upon review of the photos for this segment, classification made in the field was confirmed and additional indicators of potential future erosion were included. Segment added to include sparse lower riverbank vegetation.



Photo 1631 Location





Photo ID 1425 (photo covers segment)



Segment 332 – Left Bank

Riverbank Features	Characteristics
Upper Riverbank Slope	Moderate
Upper Riverbank Height	High
Upper Riverbank Sediment	Silt/Sand
Upper Riverbank Vegetation	Moderate
Lower Riverbank Slope	Moderate
Lower Riverbank Sediment	Clay
Lower Riverbank Vegetation	None to very sparse
Type of Erosion	Slide
Potential Erosion Indicators	Overhanging, Exposed roots
Stage of Erosion	Potential Future Erosion
Extent of Erosion	Some

**QA Observations:** Upon review of the photos for this segment, classification made in the field was confirmed and additional indicators of potential future erosion were included. Segment added to include clay.



Photo 1425 Location





Photo ID 480 (mid-segment)





Photo ID 481 (middle)



Photo ID 482 (U/S)



Segment 403 – Right Bank

Riverbank Features	Characteristics
Upper Riverbank Slope	Steep
Upper Riverbank Height	High
Upper Riverbank Sediment	Bedrock
Upper Riverbank Vegetation	Moderate
Lower Riverbank Slope	Vertical
Lower Riverbank Sediment	Bedrock
Lower Riverbank Vegetation	None to very sparse
Type of Erosion	
Potential Erosion Indicators	None
Stage of Erosion	Stable
Extent of Erosion	None/Little

**QA Observations:** Upon review of the photos for this segment, classification made in the field was confirmed. Segment added to include vertical lower riverbank.



Photo 480 Location