



Photo ID 1447 (near mid-segment)

Segment 320 – Left Bank

Riverbank Features	Characteristics
Upper Riverbank Slope	Moderate
Upper Riverbank Height	High
Upper Riverbank Sediment	Silt/Sand
Upper Riverbank Vegetation	Heavy
Lower Riverbank Slope	Flat/Beach
Lower Riverbank Sediment	Silt/Sand
Lower Riverbank Vegetation	None to very sparse
Type of Erosion	Undercut
Potential Erosion Indicators	Creep/Leaning trees, Exposed Roots
Stage of Erosion	Stable
Extent of Erosion	None/Little

QA Observations: Upon review of the photos for this segment, classification made in the field was confirmed and additional indicators of potential future erosion were included.



Photo 1447 Location



Photo ID 1429 (near mid-segment)

Segment 330 – Left Bank

Riverbank Features	Characteristics
Upper Riverbank Slope	Moderate
Upper Riverbank Height	High
Upper Riverbank Sediment	Silt/Sand
Upper Riverbank Vegetation	Heavy
Lower Riverbank Slope	Moderate
Lower Riverbank Sediment	Silt/Sand
Lower Riverbank Vegetation	None to very sparse
Type of Erosion	Slide
Potential Erosion Indicators	Creep/leaning trees, Overhanging bank, Exposed roots
Stage of Erosion	Eroded
Extent of Erosion	Some

QA Observations: Upon review of the photos for this segment, classification made in the field was confirmed and additional indicators of potential future erosion were included.



Photo 1429 Location



Photo ID 1408 (near mid-segment)



Photo ID 1406 (U/S)



Photo ID 1407 (middle)



Photo ID 1409 (middle)



Photo ID 1410 (D/S)

Segment 340 – Left Bank

Riverbank Features	Characteristics
Upper Riverbank Slope	Moderate
Upper Riverbank Height	High
Upper Riverbank Sediment	Bedrock
Upper Riverbank Vegetation	None to very sparse
Lower Riverbank Slope	Steep
Lower Riverbank Sediment	Bedrock
Lower Riverbank Vegetation	None to very sparse
Type of Erosion	
Potential Erosion Indicators	None
Stage of Erosion	Stable
Extent of Erosion	None/Little

QA Observations: Upon review of the photos for this segment, classification made in the field was confirmed.



Photo 1408 Location



Photo ID 314 (segment is labeled portion of photo. Dashed line represents approximate end of segment)

Segment 350 – Right Bank

Riverbank Features	Characteristics
Upper Riverbank Slope	Flat
Upper Riverbank Height	Low
Upper Riverbank Sediment	Silt/Sand
Upper Riverbank Vegetation	Heavy
Lower Riverbank Slope	Flat/Beach
Lower Riverbank Sediment	Silt/Sand
Lower Riverbank Vegetation	None to very sparse
Type of Erosion	
Potential Erosion Indicators	None
Stage of Erosion	Stable
Extent of Erosion	None/Little

QA Observations: Upon review of the photos for this segment, classification made in the field was confirmed.

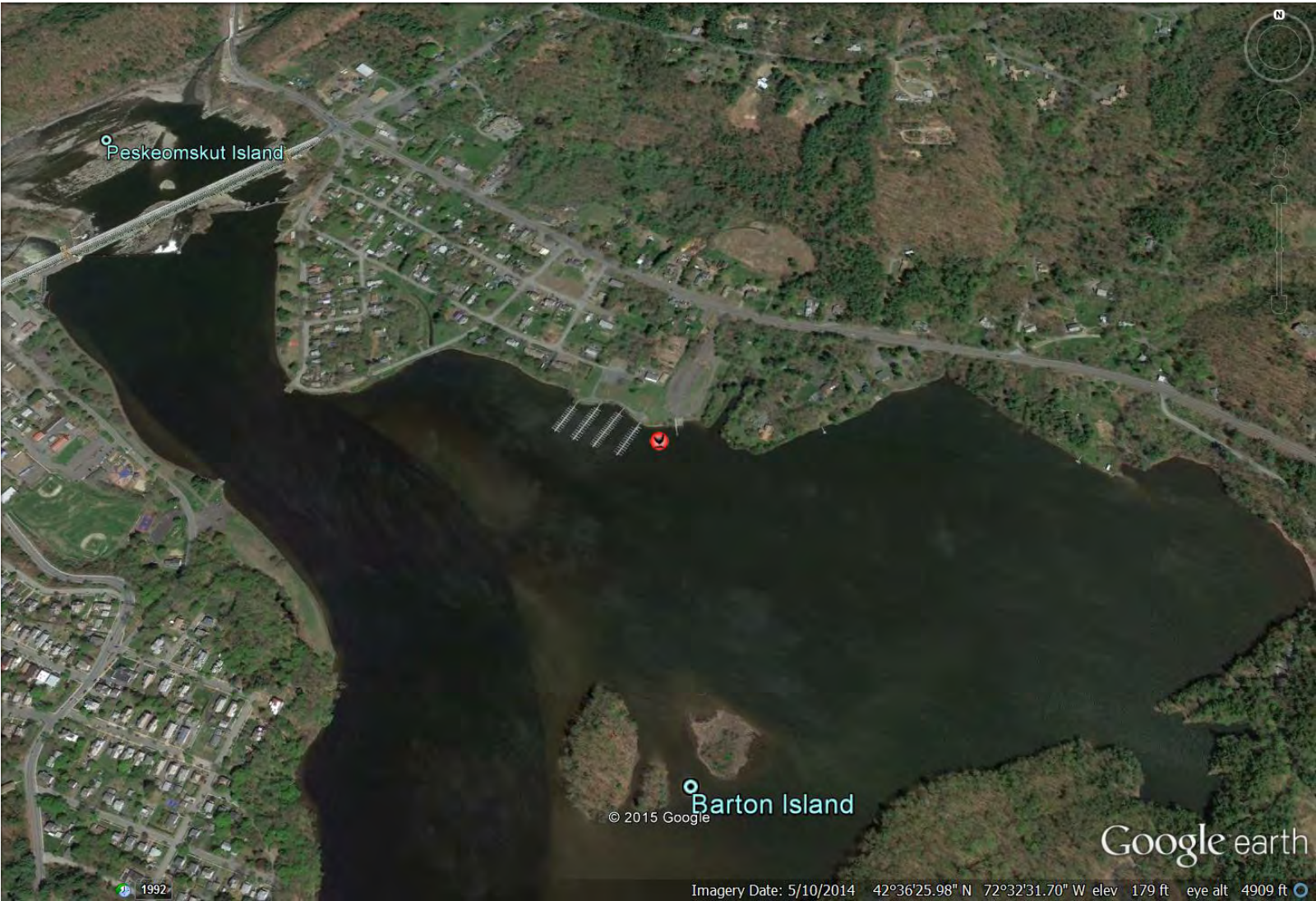


Photo 314 Location



Photo ID 348 (near mid-segment)



Photo ID 346 (D/S)



Photo ID 347 (middle)



Photo ID 349 (middle)

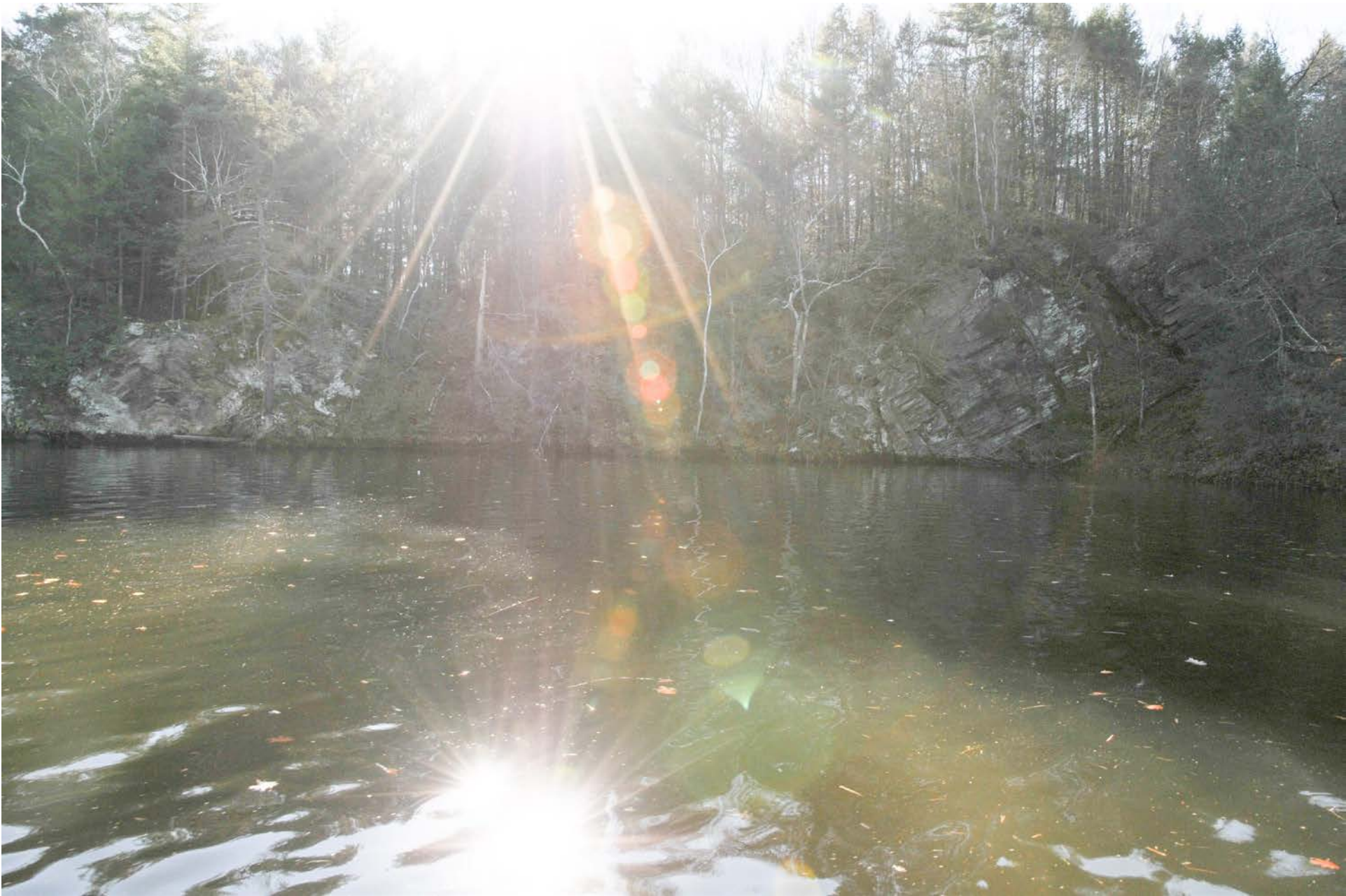


Photo ID 350 (middle)



Photo ID 351 (D/S)

Segment 360 – Right Bank

Riverbank Features	Characteristics
Upper Riverbank Slope	Steep
Upper Riverbank Height	High
Upper Riverbank Sediment	Bedrock
Upper Riverbank Vegetation	Moderate
Lower Riverbank Slope	Steep
Lower Riverbank Sediment	Bedrock
Lower Riverbank Vegetation	None to very sparse
Type of Erosion	
Potential Erosion Indicators	None
Stage of Erosion	Stable
Extent of Erosion	None/Little

QA Observations: Upon review of the photos for this segment, classification made in the field was confirmed.



Photo 348 Location



Photo ID 383 (near mid-segment)



Photo ID 382 (D/S)



Photo ID 384 (D/S, Segments 371 and 372 are also visible in this photo)

Segment 370 – Right Bank

Riverbank Features	Characteristics
Upper Riverbank Slope	Steep
Upper Riverbank Height	High
Upper Riverbank Sediment	Bedrock
Upper Riverbank Vegetation	Moderate
Lower Riverbank Slope	Steep
Lower Riverbank Sediment	Bedrock
Lower Riverbank Vegetation	None to very sparse
Type of Erosion	
Potential Erosion Indicators	None
Stage of Erosion	Stable
Extent of Erosion	None/Little

QA Observations: Upon review of the photos for this segment, classification made in the field was confirmed.

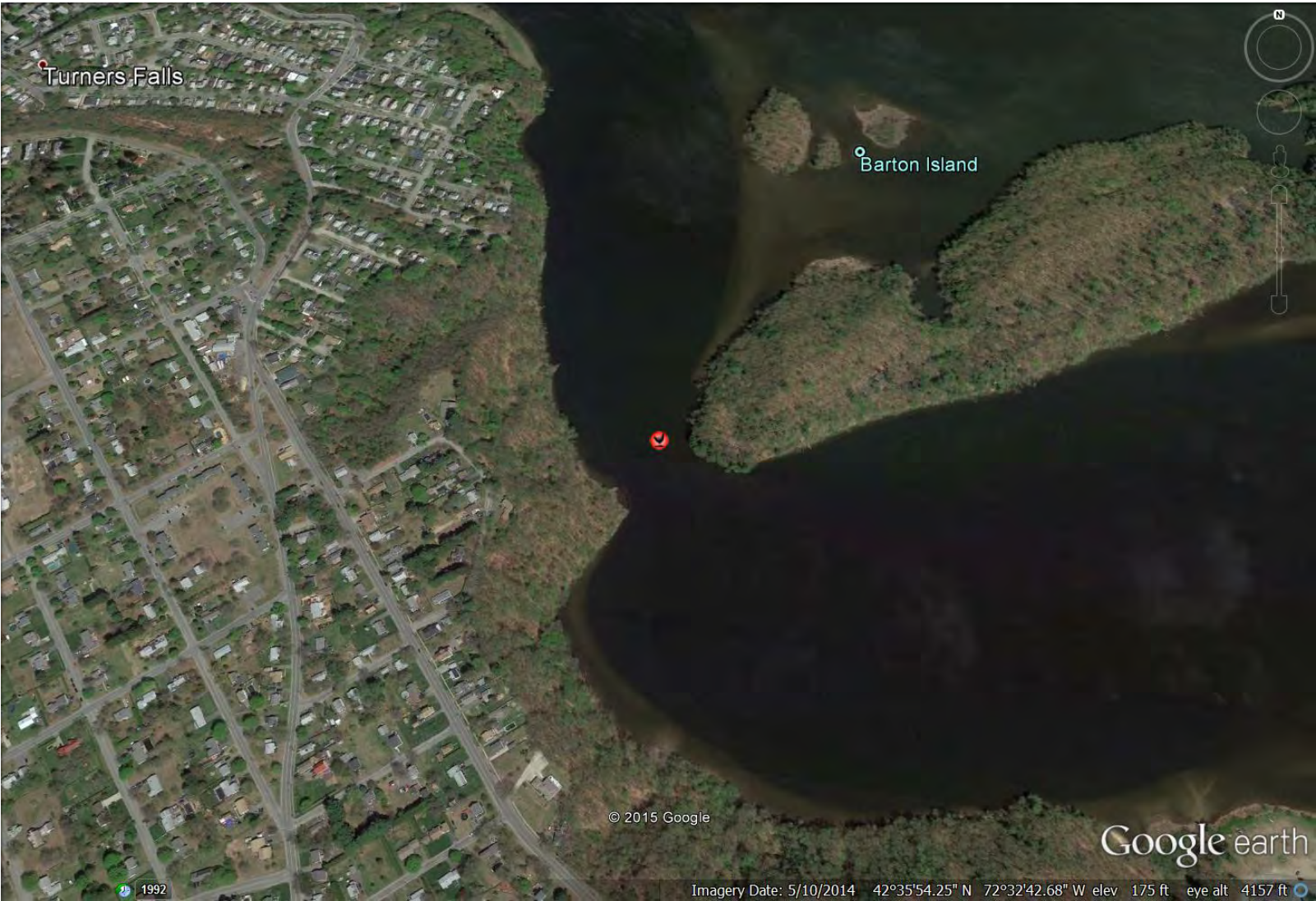


Photo 383 Location



Photo ID 424 (photo includes segment)

Segment 380 – Right Bank

Riverbank Features	Characteristics
Upper Riverbank Slope	Moderate
Upper Riverbank Height	High
Upper Riverbank Sediment	Silt/Sand
Upper Riverbank Vegetation	Heavy
Lower Riverbank Slope	Flat/Beach
Lower Riverbank Sediment	Silt/Sand
Lower Riverbank Vegetation	Heavy
Type of Erosion	
Potential Erosion Indicators	None
Stage of Erosion	Stable
Extent of Erosion	None/Little

QA Observations: Upon review of the photos for this segment, classification made in the field was confirmed.



Photo 424 Location



Photo ID 446 (D/S portion of segment)

Segment 390 – Right Bank

Riverbank Features	Characteristics
Upper Riverbank Slope	Moderate
Upper Riverbank Height	High
Upper Riverbank Sediment	Silt/Sand
Upper Riverbank Vegetation	Heavy
Lower Riverbank Slope	Moderate
Lower Riverbank Sediment	Bedrock
Lower Riverbank Vegetation	None to very sparse
Type of Erosion	Undercut
Potential Erosion Indicators	None
Stage of Erosion	Stable
Extent of Erosion	None/Little

QA Observations: Upon review of the photos for this segment, classification made in the field was confirmed.

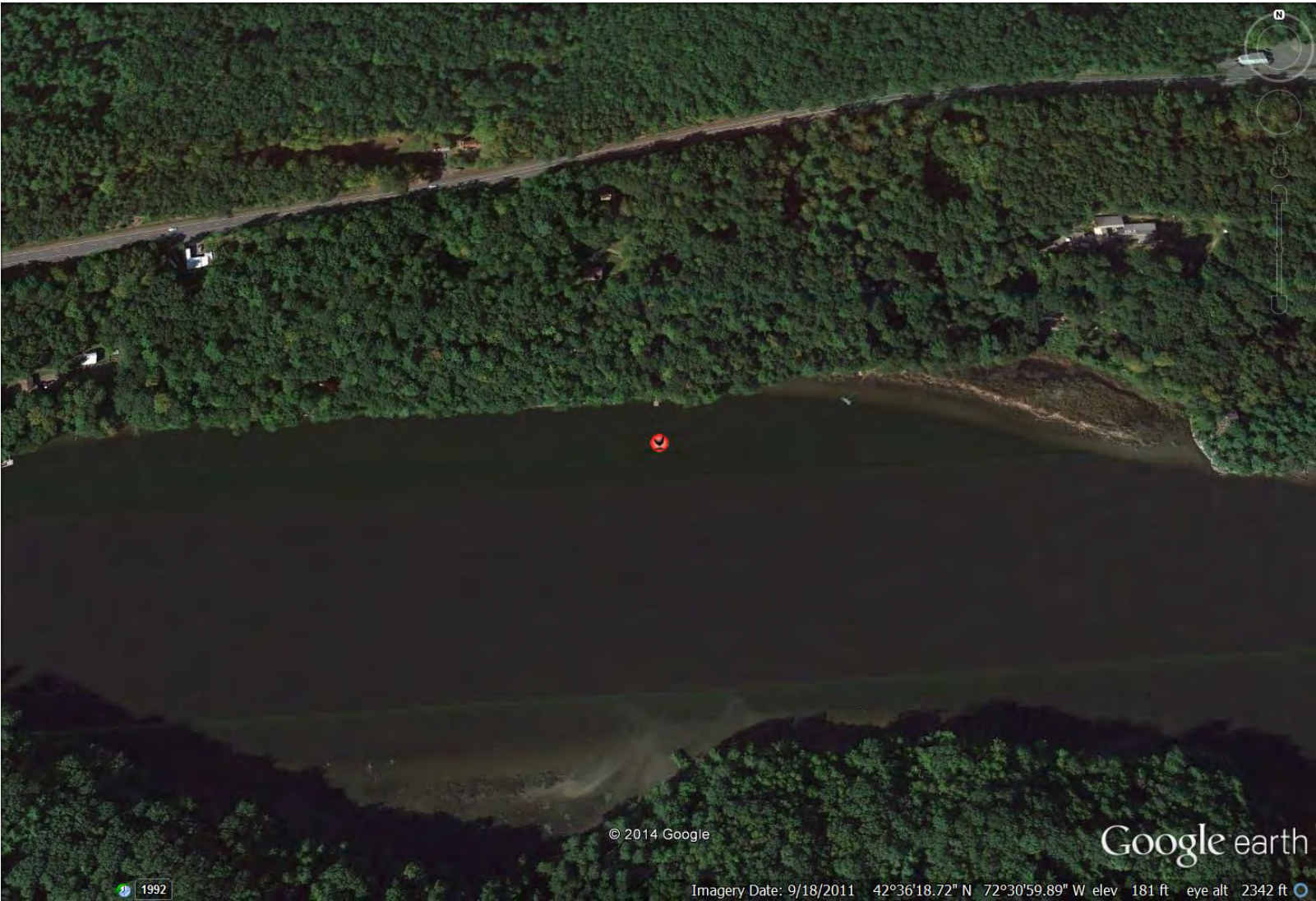


Photo 446 Location



Photo ID 476 (labeled portion of photo is right, D/S portion of segment. Dashed line represents approximate end of segment)

Segment 400 – Right Bank

Riverbank Features	Characteristics
Upper Riverbank Slope	Moderate
Upper Riverbank Height	High
Upper Riverbank Sediment	Silt/Sand
Upper Riverbank Vegetation	Heavy
Lower Riverbank Slope	Flat/Beach
Lower Riverbank Sediment	Silt/Sand
Lower Riverbank Vegetation	None to very sparse
Type of Erosion	Undercut
Potential Erosion Indicators	Creep/leaning trees
Stage of Erosion	Stable
Extent of Erosion	None/Little

QA Observations: Upon review of the photos for this segment, classification made in the field was confirmed.



Photo 476 Location



Photo ID 505 (mid-segment)



Photo ID 503 (D/S)



Photo ID 504 (middle)



Photo ID 506 (middle)



Photo ID 507 (middle)



Photo ID 508 (U/S)



Photo ID 509 (U/S)

Segment 410 – Right Bank

Riverbank Features	Characteristics
Upper Riverbank Slope	Steep
Upper Riverbank Height	High
Upper Riverbank Sediment	Silt/Sand
Upper Riverbank Vegetation	Heavy
Lower Riverbank Slope	Moderate
Lower Riverbank Sediment	Boulders
Lower Riverbank Vegetation	None to very sparse
Type of Erosion	Undercut
Potential Erosion Indicators	Creep/leaning trees, Exposed roots
Stage of Erosion	Stable
Extent of Erosion	None/Little

QA Observations: Upon review of the photos for this segment, classification made in the field was confirmed and additional indicators of potential future erosion were included.



Photo 505 Location



Photo ID 546 (mid-segment)



Photo ID 542 (D/S)



Photo ID 543 (middle)



Photo ID 544 (middle)



Photo ID 545 (middle)



Photo ID 547 (middle)



Photo ID 548 (middle)



Photo ID 549 (middle)



Photo ID 550 (U/S)