



Photo ID 883 (left, U/S portion of segment shown in labeled portion of photo. Dashed line represents approximate end of segment)



Photo ID 882 (U/S and includes some of next segment)

Segment 210 – Left Bank

Riverbank Features	Characteristics
Upper Riverbank Slope	Moderate
Upper Riverbank Height	Low
Upper Riverbank Sediment	Silt/Sand
Upper Riverbank Vegetation	Heavy
Lower Riverbank Slope	Moderate
Lower Riverbank Sediment	Boulders
Lower Riverbank Vegetation	None to very sparse
Type of Erosion	
Potential Erosion Indicators	Creep/leaning trees
Stage of Erosion	Stable
Extent of Erosion	None/Little

QA Observations: Upon review of the photos for this segment, classification made in the field was confirmed.



Photo 883 Location



Photo ID 903 (left, U/S portion of segment shown in labeled portion of photo. Dashed line represents approximate end of segment)



Photo ID 902 (D/S and includes next segments)

Segment 220 – Left Bank

Riverbank Features	Characteristics
Upper Riverbank Slope	Steep
Upper Riverbank Height	High
Upper Riverbank Sediment	Silt/Sand
Upper Riverbank Vegetation	Heavy
Lower Riverbank Slope	Moderate
Lower Riverbank Sediment	Cobbles
Lower Riverbank Vegetation	None to very sparse
Type of Erosion	Undercut
Potential Erosion Indicators	Creep/leaning trees, Exposed roots
Stage of Erosion	Potential Future Erosion
Extent of Erosion	Some

QA Observations: Upon review of the photos for this segment, classification made in the field was confirmed and additional indicators of potential future erosion were included.



Photo 903 Location



Photo ID 1707 (labeled portion of photo is right, D/S portion of segment. Dashed line represents approximate end of segment)



Photo ID 1706 (Right side of photo depicts a portion of Segment 230)

Segment 230 – Left Bank

Riverbank Features	Characteristics
Upper Riverbank Slope	Overhanging
Upper Riverbank Height	Medium
Upper Riverbank Sediment	Silt/Sand
Upper Riverbank Vegetation	Moderate
Lower Riverbank Slope	Flat/Beach
Lower Riverbank Sediment	Silt/Sand
Lower Riverbank Vegetation	None to very sparse
Type of Erosion	
Potential Erosion Indicators	Creep/leaning trees, Overhanging bank, Exposed roots
Stage of Erosion	Potential Future Erosion
Extent of Erosion	Some

QA Observations: Upon review of the photos for this segment, classification made in the field was confirmed and additional indicators of potential future erosion were included.



Photo 1707 Location



Photo ID 1702 (labeled portion of photo is right, D/S portion of segment. Dashed line represents approximate end of segment)



Photo ID 1700 (U/S)



Photo ID 1701 (middle)

Segment 240 – Left Bank

Riverbank Features	Characteristics
Upper Riverbank Slope	Vertical
Upper Riverbank Height	Low
Upper Riverbank Sediment	Silt/Sand
Upper Riverbank Vegetation	Moderate
Lower Riverbank Slope	Flat/Beach
Lower Riverbank Sediment	Silt/Sand
Lower Riverbank Vegetation	None to very sparse
Type of Erosion	Undercut
Potential Erosion Indicators	Creep/leaning trees, Exposed roots, Overhanging bank
Stage of Erosion	Eroded
Extent of Erosion	Some

QA Observations: Upon review of the photos for this segment, classification made in the field was confirmed and additional indicators of potential future erosion were included.



Photo 1702 Location



Photo ID 1670 (segment shown in labeled portion of photo. Dashed line represents approximate end of segment)

Segment 250 – Left Bank

Riverbank Features	Characteristics
Upper Riverbank Slope	Overhanging
Upper Riverbank Height	High
Upper Riverbank Sediment	Silt/Sand
Upper Riverbank Vegetation	Moderate
Lower Riverbank Slope	Flat/Beach
Lower Riverbank Sediment	Silt/Sand
Lower Riverbank Vegetation	None to very sparse
Type of Erosion	Slide, Rotational Slump
Potential Erosion Indicators	Overhanging bank, Creep/leaning trees, Exposed roots,
Stage of Erosion	Eroded
Extent of Erosion	Some

QA Observations: Upon review of the photos for this segment, classification made in the field was confirmed and additional indicators of potential future erosion were included.



Photo 1670 Location



Photo ID 1661 (mid-segment)



Photo ID 1660 (U/S)

Segment 260 – Left Bank

Riverbank Features	Characteristics
Upper Riverbank Slope	Steep
Upper Riverbank Height	High
Upper Riverbank Sediment	Silt/Sand
Upper Riverbank Vegetation	Moderate
Lower Riverbank Slope	Flat/Beach
Lower Riverbank Sediment	Boulders
Lower Riverbank Vegetation	None to very sparse
Type of Erosion	Rotational Slump, Undercut
Potential Erosion Indicators	Creep/leaning trees, Overhanging bank, Exposed roots
Stage of Erosion	Eroded
Extent of Erosion	Some

QA Observations: Upon review of the photos for this segment, classification made in the field was confirmed and additional indicators of potential future erosion were included.



Photo 1661 Location



Photo ID 1647 (labeled portion of photo is right, D/S portion of segment. Dashed line represents approximate end of segment)



Photo ID 1646 (Right side of photo depicts the U/S portion of the segment)

Segment 270 – Left Bank

Riverbank Features	Characteristics
Upper Riverbank Slope	Steep
Upper Riverbank Height	High
Upper Riverbank Sediment	Silt/Sand
Upper Riverbank Vegetation	Heavy
Lower Riverbank Slope	Flat/Beach
Lower Riverbank Sediment	Silt/Sand
Lower Riverbank Vegetation	None to very sparse
Type of Erosion	
Potential Erosion Indicators	None
Stage of Erosion	Stable
Extent of Erosion	None/Little

QA Observations: Upon review of the photos for this segment, classification made in the field was confirmed.



Photo 1647 Location



Photo ID 1628 (mid-segment)



Photo ID 1626 (U/S)



Photo ID 1627 (middle)



Photo ID 1629 (middle)



Photo ID 1630 (D/S)

Segment 280 – Left Bank

Riverbank Features	Characteristics
Upper Riverbank Slope	Steep
Upper Riverbank Height	High
Upper Riverbank Sediment	Silt/Sand
Upper Riverbank Vegetation	Heavy
Lower Riverbank Slope	Flat/Beach
Lower Riverbank Sediment	Silt/Sand
Lower Riverbank Vegetation	None to very sparse
Type of Erosion	Undercut
Potential Erosion Indicators	Creep/leaning trees, Exposed roots, Overhanging bank
Stage of Erosion	Stable
Extent of Erosion	None/Little

QA Observations: Upon review of the photos for this segment, classification made in the field was confirmed and additional indicators of potential future erosion were included.



Photo 1628 Location



Photo ID 1605 (near left, U/S side of segment)



Photo ID 1603 (D/S)



Photo ID 1604 (middle)

Segment 290 – Left Bank

Riverbank Features	Characteristics
Upper Riverbank Slope	Moderate
Upper Riverbank Height	High
Upper Riverbank Sediment	Silt/Sand
Upper Riverbank Vegetation	Heavy
Lower Riverbank Slope	Flat/Beach
Lower Riverbank Sediment	gravel
Lower Riverbank Vegetation	None to very sparse
Type of Erosion	Undercut
Potential Erosion Indicators	Creep/leaning trees
Stage of Erosion	Stable
Extent of Erosion	None/Little

QA Observations: Upon review of the photos for this segment, classification made in the field was confirmed.

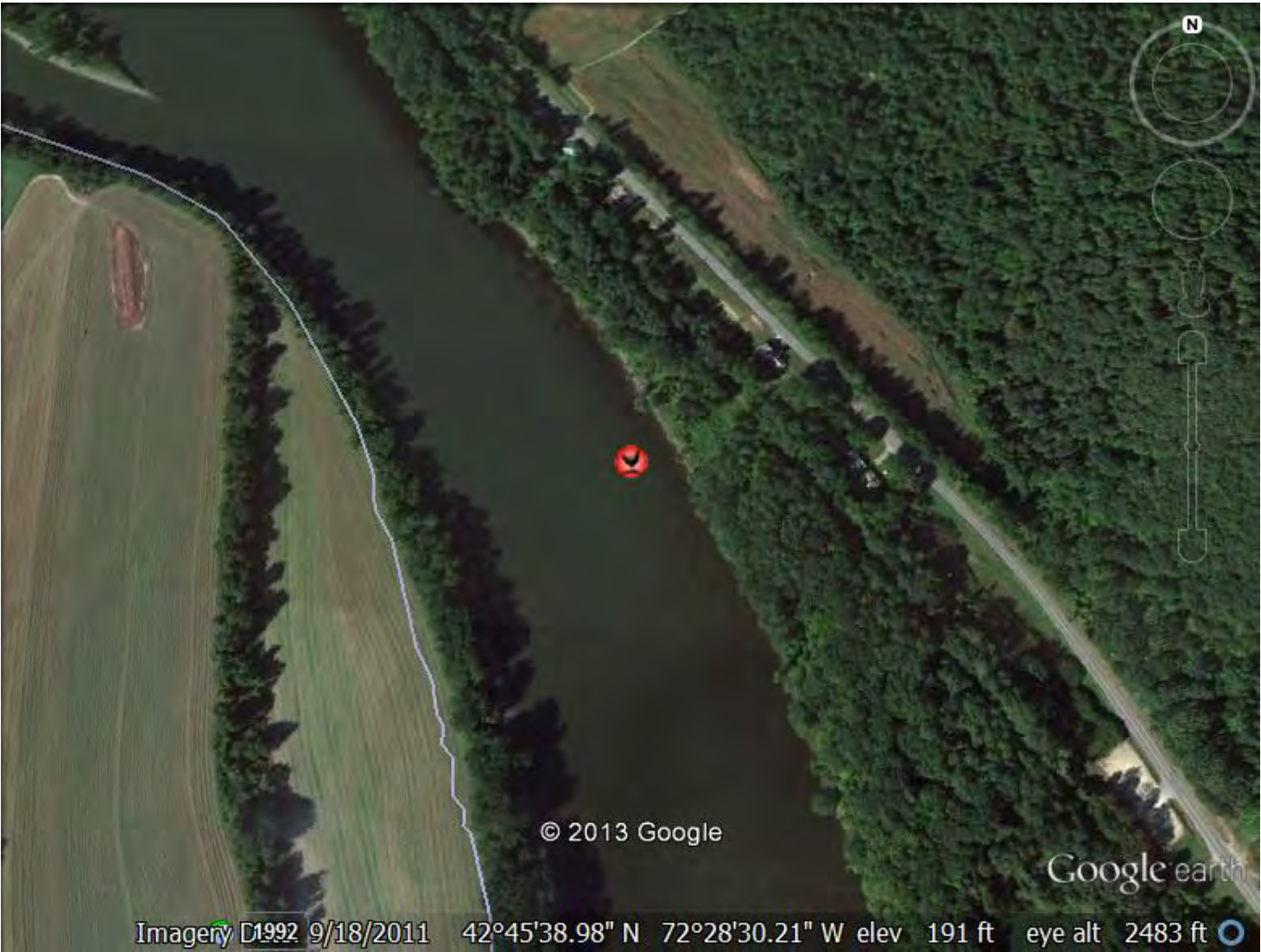


Photo 1605 Location



Photo ID 1586 (mid-segment)



Photo ID 1584 (U/S)



Photo ID 1585 (middle)



Photo ID 1587 (D/S)

Segment 300 – Left Bank

Riverbank Features	Characteristics
Upper Riverbank Slope	Moderate
Upper Riverbank Height	High
Upper Riverbank Sediment	Silt/Sand
Upper Riverbank Vegetation	Heavy
Lower Riverbank Slope	Flat/Beach
Lower Riverbank Sediment	Silt/Sand
Lower Riverbank Vegetation	Moderate
Type of Erosion	
Potential Erosion Indicators	None
Stage of Erosion	Stable
Extent of Erosion	None/Little

QA Observations: Upon review of the photos for this segment, classification made in the field was confirmed.



Photo 1586 Location



Photo ID 1564 (near right, D/S side of segment)

Segment 310 – Left Bank

Riverbank Features	Characteristics
Upper Riverbank Slope	Steep
Upper Riverbank Height	Medium
Upper Riverbank Sediment	Silt/Sand
Upper Riverbank Vegetation	Moderate
Lower Riverbank Slope	Flat/Beach
Lower Riverbank Sediment	Silt/Sand
Lower Riverbank Vegetation	None to very sparse
Type of Erosion	Slide
Potential Erosion Indicators	Other, Creep/leaning trees, Exposed roots, Overhanging bank
Stage of Erosion	Eroded
Extent of Erosion	Some

QA Observations: Upon review of the photos for this segment, classification made in the field was confirmed and additional indicators of potential future erosion were included.



Photo 1564 Location