

Segment 90 – Left Bank

Riverbank Features	Characteristics
Upper Riverbank Slope	Steep
Upper Riverbank Height	High
Upper Riverbank Sediment	Silt/Sand
Upper Riverbank Vegetation	Moderate
Lower Riverbank Slope	Flat/Beach
Lower Riverbank Sediment	Silt/Sand
Lower Riverbank Vegetation	None to very sparse
Type of Erosion	Rotational Slump, Undercut
Potential Erosion Indicators	Overhanging bank, Exposed roots, Creep/leaning trees
Stage of Erosion	Eroded
Extent of Erosion	Extensive

QA Observations: Upon review of the photos for this segment, classification made in the field was confirmed and additional indicators of potential future erosion were included.



Photo 613 Location



Photo ID 632 (segment is labeled portion of photograph. Dashed lines represent approximate ends of segment)

Segment 100 – Left Bank

Riverbank Features	Characteristics
Upper Riverbank Slope	Moderate
Upper Riverbank Height	Low
Upper Riverbank Sediment	Boulders
Upper Riverbank Vegetation	Moderate
Lower Riverbank Slope	Moderate
Lower Riverbank Sediment	Boulders
Lower Riverbank Vegetation	None to very sparse
Type of Erosion	None
Potential Erosion Indicators	
Stage of Erosion	Stable
Extent of Erosion	None/Little

QA Observations: Upon review of the photos for this segment, classification made in the field was confirmed.



Photo 632 Location



Photo ID 650 (left, U/S portion of segment)

Segment 110 – Left Bank

Riverbank Features	Characteristics
Upper Riverbank Slope	Steep
Upper Riverbank Height	High
Upper Riverbank Sediment	Silt/Sand
Upper Riverbank Vegetation	Heavy
Lower Riverbank Slope	Flat/Beach
Lower Riverbank Sediment	Silt/Sand
Lower Riverbank Vegetation	None to very sparse
Type of Erosion	
Potential Erosion Indicators	Creep/leaning trees, Exposed roots
Stage of Erosion	Stable
Extent of Erosion	None/Little

QA Observations: Upon review of the photos for this segment, classification made in the field was confirmed and additional indicators of potential future erosion were included.



Photo 650 Location



Photo ID 678 (mid-segment)



Photo ID 675 (D/S)



Photo ID 676 (D/S)



Photo ID 677 (middle)



Photo ID 679 (middle)



Photo ID 680 (middle)



Photo ID 681 (middle)



Photo ID 682 (middle)



Photo ID 683 (middle)



Photo ID 684 (U/S)



Photo ID 685 (U/S)

Segment 120 – Left Bank

Riverbank Features	Characteristics
Upper Riverbank Slope	Moderate
Upper Riverbank Height	High
Upper Riverbank Sediment	Silt/Sand
Upper Riverbank Vegetation	Heavy
Lower Riverbank Slope	Moderate
Lower Riverbank Sediment	Cobbles
Lower Riverbank Vegetation	None to very sparse
Type of Erosion	
Potential Erosion Indicators	None
Stage of Erosion	Stable
Extent of Erosion	None/Little

QA Observations: Upon review of the photos for this segment, classification made in the field was confirmed.



Photo 678 Location



Photo ID 717 (covers segment)

Segment 130 – Left Bank

Riverbank Features	Characteristics
Upper Riverbank Slope	Moderate
Upper Riverbank Height	High
Upper Riverbank Sediment	Silt/Sand
Upper Riverbank Vegetation	Heavy
Lower Riverbank Slope	Flat/Beach
Lower Riverbank Sediment	Boulders
Lower Riverbank Vegetation	None to very sparse
Type of Erosion	Undercut
Potential Erosion Indicators	Exposed roots, Creep/leaning trees
Stage of Erosion	Stable
Extent of Erosion	None/Little

QA Observations: Upon review of the photos for this segment, classification made in the field was confirmed and additional indicators of potential future erosion were included.



Photo 717 Location



Photo ID 745 (includes most of segment)



Photo ID 743 (D/S and includes other segment)



Photo ID 744 (D/S)



Photo ID 746 (U/S)

Segment 140 – Left Bank

Riverbank Features	Characteristics
Upper Riverbank Slope	Steep
Upper Riverbank Height	High
Upper Riverbank Sediment	Silt/Sand
Upper Riverbank Vegetation	Heavy
Lower Riverbank Slope	Flat/Beach
Lower Riverbank Sediment	Silt/Sand
Lower Riverbank Vegetation	None to very sparse
Type of Erosion	Slide
Potential Erosion Indicators	Exposed roots, Creep/leaning trees, Overhanging bank, Notch
Stage of Erosion	Eroded
Extent of Erosion	Some

QA Observations: Upon review of the photos for this segment, classification made in the field was confirmed and additional indicators of potential future erosion were included.



Photo 745 Location



Photo ID 765 (segment is in right, D/S side of photograph. Dashed line represents approximate end of segment)

Segment 150 – Left Bank

Riverbank Features	Characteristics
Upper Riverbank Slope	Steep
Upper Riverbank Height	High
Upper Riverbank Sediment	Silt/Sand
Upper Riverbank Vegetation	Heavy
Lower Riverbank Slope	Flat/Beach
Lower Riverbank Sediment	Cobbles
Lower Riverbank Vegetation	None to very sparse
Type of Erosion	Topples, Undercut
Potential Erosion Indicators	Creep/leaning trees, Exposed roots
Stage of Erosion	Eroded
Extent of Erosion	Some

QA Observations: Upon review of the photos for this segment, classification made in the field was confirmed and additional indicators of potential future erosion were included.



Photo 765 Location



Photo ID 784 (U/S)



Photo ID 783 (D/S)

Segment 160 – Left Bank

Riverbank Features	Characteristics
Upper Riverbank Slope	Moderate
Upper Riverbank Height	High
Upper Riverbank Sediment	Silt/Sand
Upper Riverbank Vegetation	Heavy
Lower Riverbank Slope	Flat/Beach
Lower Riverbank Sediment	Silt/Sand
Lower Riverbank Vegetation	None to very sparse
Type of Erosion	Undercut
Potential Erosion Indicators	Exposed roots, Creep/leaning trees
Stage of Erosion	Stable
Extent of Erosion	None/Little

QA Observations: Upon review of the photos for this segment, classification made in the field was confirmed and additional indicators of potential future erosion were included.



Photo 784 Location



Photo ID 822 (photograph shows left, U/S side of segment)



Photo ID 821 (middle)



Photo ID 823 (U/S and includes portion of next segment U/S)

Segment 170 – Left Bank

Riverbank Features	Characteristics
Upper Riverbank Slope	Overhanging
Upper Riverbank Height	High
Upper Riverbank Sediment	Silt/Sand
Upper Riverbank Vegetation	Moderate
Lower Riverbank Slope	Flat/Beach
Lower Riverbank Sediment	Silt/Sand
Lower Riverbank Vegetation	None to very sparse
Type of Erosion	Slide
Potential Erosion Indicators	Overhanging bank, Exposed roots, Creep/leaning trees
Stage of Erosion	Eroded
Extent of Erosion	Some to Extensive

QA Observations: Upon review of the photos for this segment, classification made in the field was confirmed and additional indicators of potential future erosion were included.

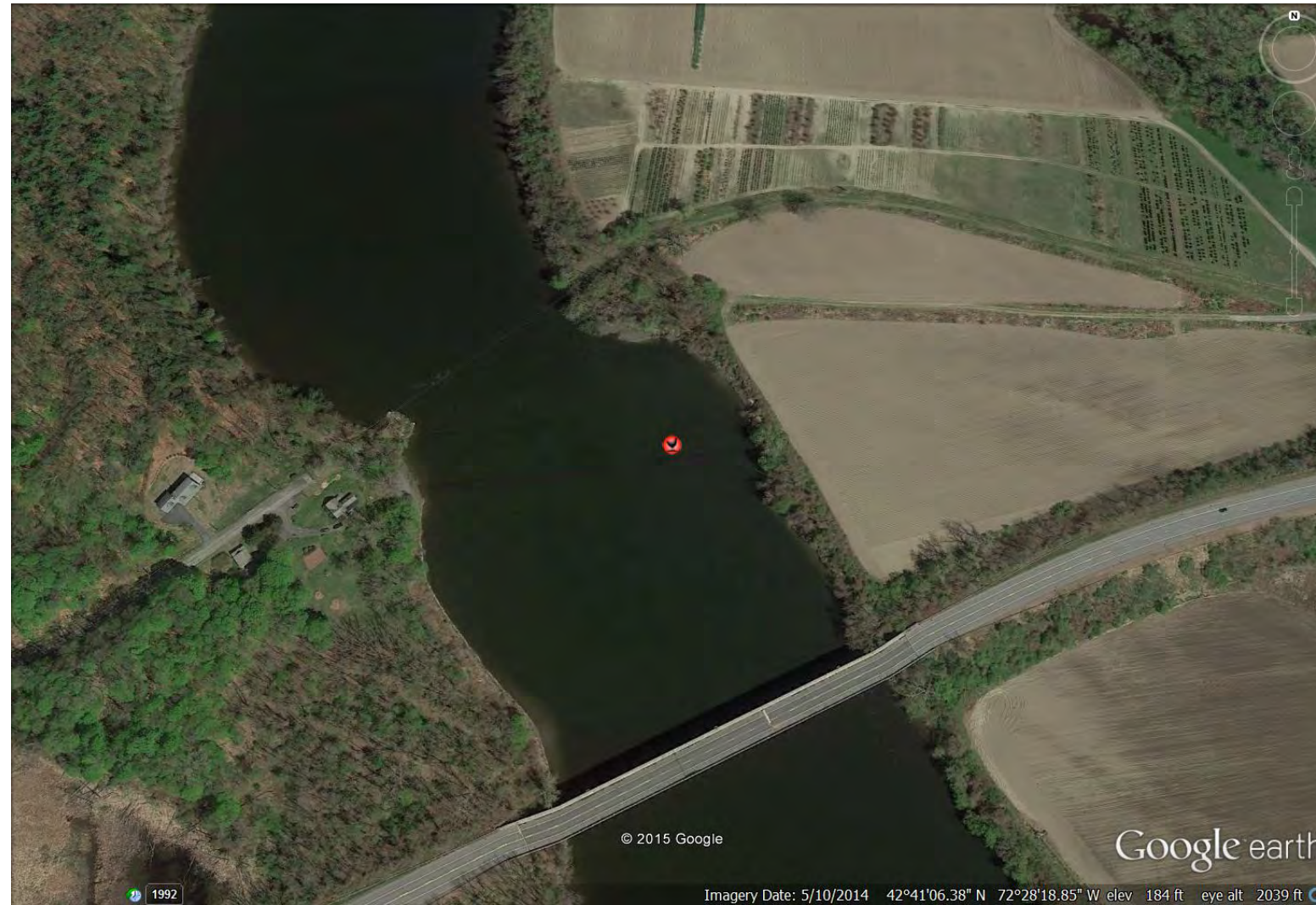


Photo 822 Location



Photo ID 844 (photograph shows left, U/S side of segment)



Photo ID 843 (D/S)

Segment 180 – Left Bank

Riverbank Features	Characteristics
Upper Riverbank Slope	Steep
Upper Riverbank Height	High
Upper Riverbank Sediment	Silt/Sand
Upper Riverbank Vegetation	Heavy
Lower Riverbank Slope	Flat/Beach
Lower Riverbank Sediment	Silt/Sand
Lower Riverbank Vegetation	None to very sparse
Type of Erosion	Undercut
Potential Erosion Indicators	Creep/leaning trees, Exposed roots
Stage of Erosion	Stable
Extent of Erosion	None/Little

QA Observations: Upon review of the photos for this segment, classification made in the field was confirmed and additional indicators of potential future erosion were included.

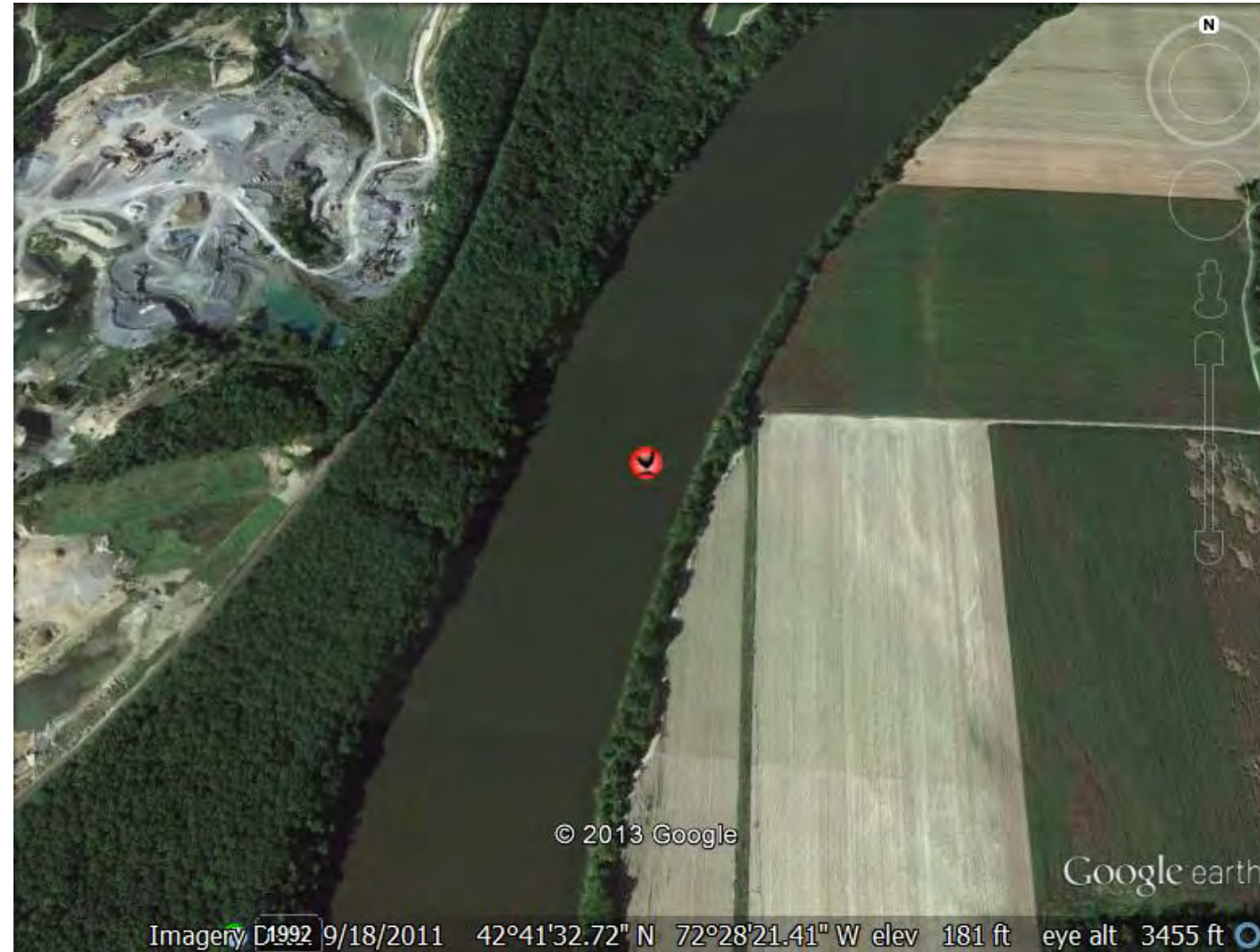


Photo 844 Location



Photo ID 854 (mid-segment)

Segment 190 – Left Bank

Riverbank Features	Characteristics
Upper Riverbank Slope	Overhanging
Upper Riverbank Height	High
Upper Riverbank Sediment	Silt/Sand
Upper Riverbank Vegetation	Moderate
Lower Riverbank Slope	Flat/Beach
Lower Riverbank Sediment	Silt/Sand
Lower Riverbank Vegetation	None to very sparse
Type of Erosion	Slide, undercut
Potential Erosion Indicators	Exposed roots, Overhanging bank, Creep/leaning trees
Stage of Erosion	Eroded
Extent of Erosion	Some

QA Observations: Upon review of the photos for this segment, classification made in the field was confirmed and additional indicators of potential future erosion were included.



Photo 854 Location



Photo ID 867 (mid-segment)



Photo ID 866 (D/S)



Photo ID 868 (U/S)

Segment 200 – Left Bank

Riverbank Features	Characteristics
Upper Riverbank Slope	Steep
Upper Riverbank Height	High
Upper Riverbank Sediment	Silt/Sand
Upper Riverbank Vegetation	Heavy
Lower Riverbank Slope	Flat/Beach
Lower Riverbank Sediment	Silt/Sand
Lower Riverbank Vegetation	None to very sparse
Type of Erosion	Undercut
Potential Erosion Indicators	Creep/leaning trees, Exposed roots, Overhanging bank
Stage of Erosion	Eroded
Extent of Erosion	Some

QA Observations: Upon review of the photos for this segment, classification made in the field was confirmed and additional indicators of potential future erosion were included.

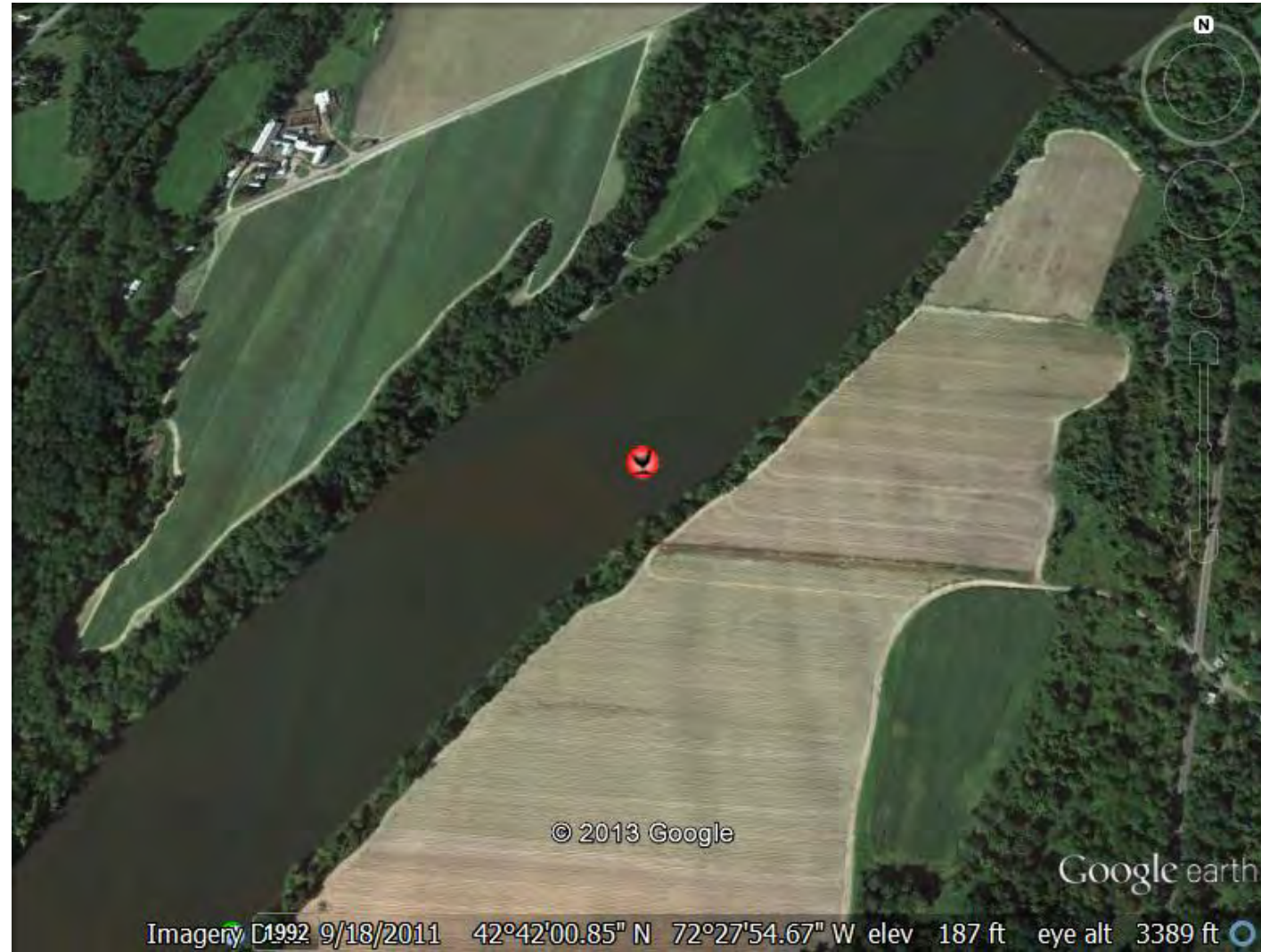


Photo 867 Location